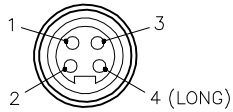


MALE END VIEW

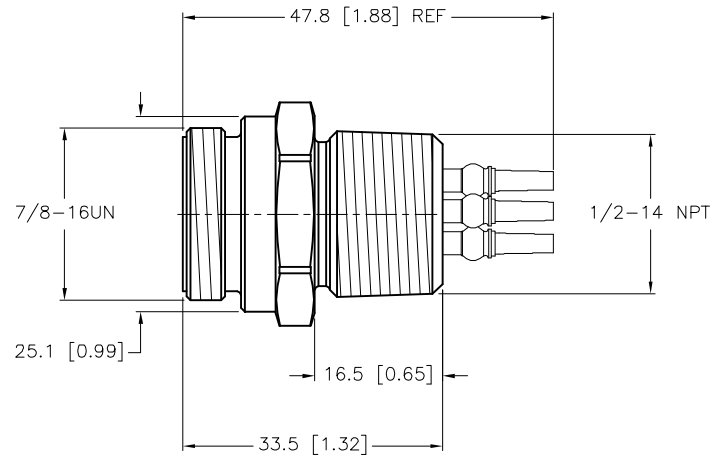
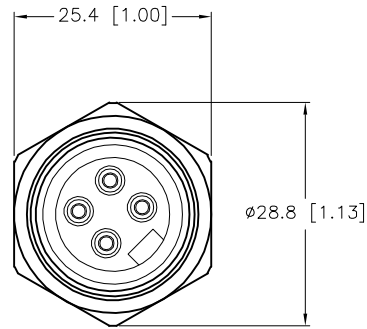


- 1 = BROWN (+ PA)
- 2 = N/C
- 3 = BLUE (- PA)
- 4 = BARE (SHIELD)

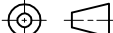



SPECIFICATIONS

CONTACT CARRIER MATERIAL	TPU
CONTACT MATERIAL/PLATING	BRASS/GOLD
HOUSING MATERIAL/FINISH	316 STAINLESS STEEL/PASSIVATED
RATED CURRENT [A]	9.0 A
RATED VOLTAGE [V]	600 V
NUMBER OF CONDUCTORS [AWG]	4-SOLDER LUGS [16 AWG SOLDER CAPACITY]
TEMPERATURE RATING	-40°C to +105°C (-40°F to +221°F)
PROTECTION CLASS	MEETS NEMA 1,3,4,6,13 AND IEC IP67



SOURCE DRAWING - FOR REFERENCE ONLY

RELATED DOCUMENTS 1. 2. 3. 4.	3RD ANGLE PROJECTION			THIS DRAWING IS CONFIDENTIAL AND THE PROPERTY OF TURCK INC. USE OF THIS DOCUMENT WITHOUT WRITTEN PERMISSION IS PROHIBITED.				3000 CAMPUS DRIVE MINNEAPOLIS, MN 55441 1-800-544-7769 (763) 553-7300 (763) 553-0708 fax www.turck.us				
	MATERIAL	ALL DIMENSIONS DISPLAYED ON THIS DRAWING ARE FOR REFERENCE ONLY	DRFT CBM	DATE 05/22/01	DESCRIPTION RSFV 48		IDENTIFICATION NO. U7895			REV B		
			APVD	SCALE 1=1.0								
FINISH	CONTACT TURCK FOR MORE INFORMATION		UNIT OF MEASUREMENT MILLIMETER [INCH]		FILE: U7895				SHEET 1 OF 1			
		DO NOT SCALE THIS DRAWING										

B	CONVERT DRAWING TO TURCK FORMAT	CBM	08/30/04	11884
REV	DESCRIPTION	BY	DATE	ECO. NO.